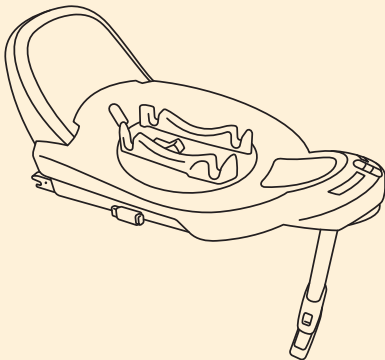


Quick Guide

BeSafe®



BeSafe Beyond Base

Used together with:



BeSafe Go Beyond [all versions]



BeSafe Beyond [all versions]



BeSafe Beyond 360 [all versions]

SCAN ME
FOR HELP



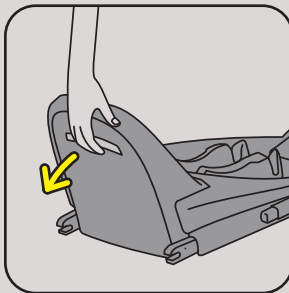
<https://hello.besafe.com/en/support/besafe-beyond-base>

support.global@besafe.com

www.besafe.com

! Safety steps:

1 Adjust the front brace



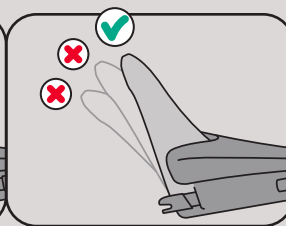
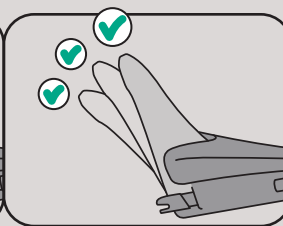
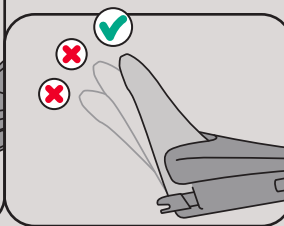
+ Go Beyond



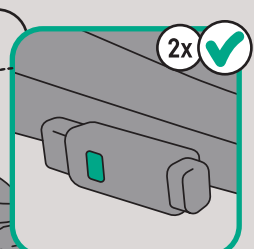
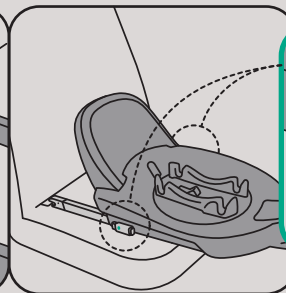
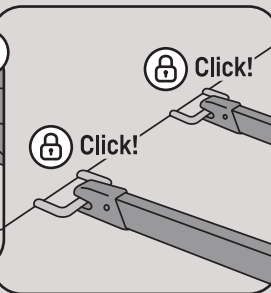
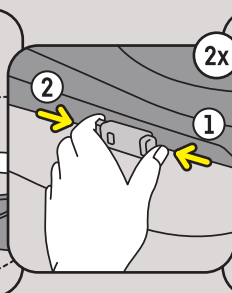
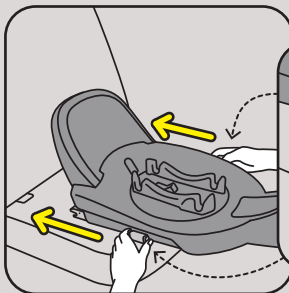
+ Beyond
+ Beyond 360



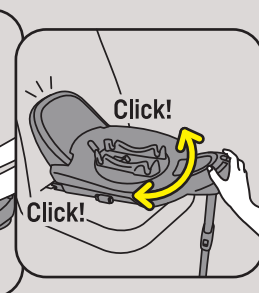
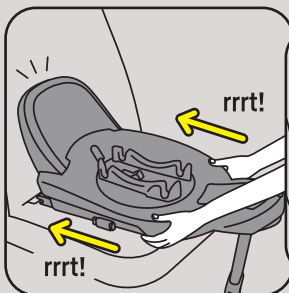
+ Beyond 360



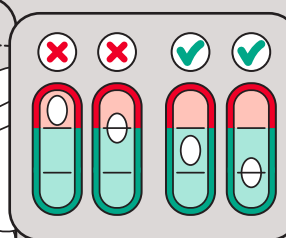
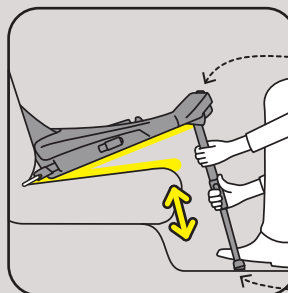
2 Connect the ISOfix anchors



3 Push into backrest



4 Level the floor support



Placing a seat on the base

